

UCG70-12

12V 70AH
Deep Cycle Gel

Ultracell®

Quality in Every Language

UCG70-12



Physical Specification

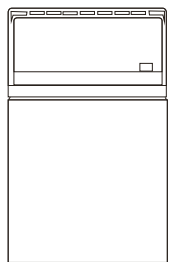
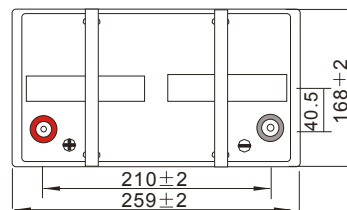
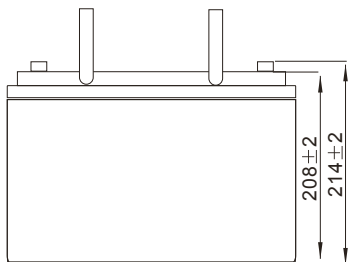
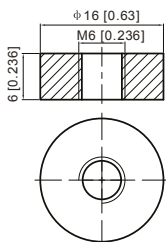
Part Number	UCG70-12
Length	259 ± 2 mm
Width	168 ± 2 mm
Container Height	208 ± 2 mm
Total Height (with terminal)	214 ± 2 mm
Approx Weight	22.3 kg

Specifications

	Nominal Voltage	12V
	Nominal Capacity (10HR)	70.0AH
Terminal Type	Standard Terminal	F6
Container Material	Standard Option	ABS
Rated Capacity	20hr, 1.80V/cell, 25°C	80.4 AH/4.02A
	10hr, 1.80V/cell, 25°C	70.0 AH/7.00A
	5hr, 1.75V/cell, 25°C	65.8 AH/13.2A
	1hr, 1.60V/cell, 25°C	48.5 AH/48.5A
Max Discharge Current	900A (5s)	
Internal Resistance	Approx 6.6m Ω	
Discharge Characteristics	Operating Temp. Range	Discharge: -15°C~50°C
		Charge: 0°C~40°C
		Storage: -15°C~40°C
	Nominal Operating Temp. Range	25±3°C
	Cycle Use	Initial Charging Current less than 22.5A. Voltage 14.4V ~ 15.0V at 25°C Temp. Coefficient -30mV/°C
	Standby Use	No limit on Initial Charging Current Voltage 13.5V ~ 13.8V at 25°C Temp. Coefficient -20mV/°C
	Capacity affect by Temperature	40°C 103%
		25°C 100%
		0°C 86%
Design Floating Life at 20°C	15 Years	
Self Discharge	Ultracell batteries may be stored for up to 6 months at 25°C(77°F) and then a refresh charge is required. For higher temperatures the time interval will be shorter.	

Dimensions

F6 Terminal



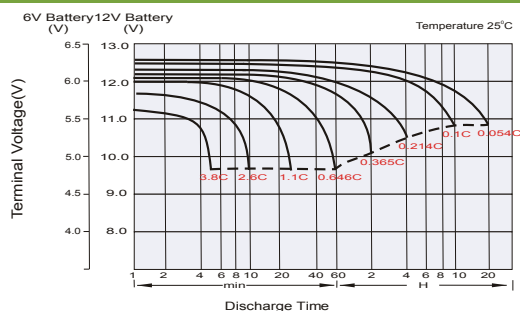
Constant Current Discharge (Amperes) at 25°C

F.V/Time	10min	15min	20min	30min	45min	1h	2h	3h	4h	5h	6h	8h	10h	20h
1.85V/cell	204.9	174.2	153.9	111.6	89.3	72.7	45.3	35.4	28.8	23.4	20.6	16.8	14.0	7.97
1.80V/cell	258.3	207.3	179.1	130.1	103.0	80.9	49.2	37.9	30.6	25.1	22.0	17.8	14.8	8.03
1.75V/cell	280.3	224.3	191.1	134.4	106.3	84.4	50.9	38.5	31.2	25.7	22.6	18.1	15.0	8.10
1.70V/cell	301.3	237.7	199.7	139.4	110.3	86.8	52.7	39.5	31.9	26.3	23.0	18.3	15.1	8.24
1.65V/cell	322.8	251.1	211.1	146.4	112.6	89.4	54.1	41.1	33.0	27.0	23.5	18.6	15.4	8.34
1.60V/cell	344.5	265.4	222.6	153.0	116.3	91.8	55.5	42.1	33.9	27.7	23.9	18.8	15.6	8.37

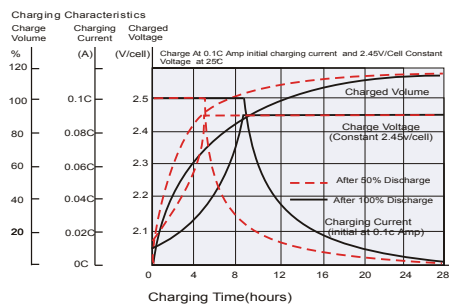
Constant Power Discharge (Watts) at 25°C

F.V/Time	10min	15min	20min	30min	45min	1h	2h	3h	4h	5h	6h	8h	10h	20h
1.85V/cell	109.8	92.4	80.7	58.1	46.1	37.4	23.3	18.1	14.7	11.9	10.4	8.50	7.08	3.98
1.80V/cell	140.3	111.6	95.4	68.6	53.7	41.9	25.4	19.5	15.7	12.8	11.2	9.02	7.50	4.02
1.75V/cell	154.2	121.9	102.7	71.2	55.7	43.9	26.3	19.9	16.0	13.2	11.5	9.17	7.58	4.06
1.70V/cell	168.0	130.2	107.9	74.1	57.9	45.3	27.4	20.4	16.5	13.5	11.7	9.30	7.65	4.13
1.65V/cell	181.4	138.4	114.6	78.1	59.4	46.8	28.1	21.3	17.0	13.9	12.0	9.45	7.81	4.19
1.60V/cell	196.9	148.1	122.1	82.5	61.9	48.5	29.1	22.0	17.6	14.3	12.2	9.54	7.89	4.21

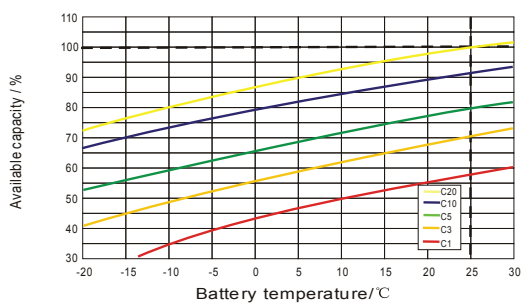
Discharge Characteristics



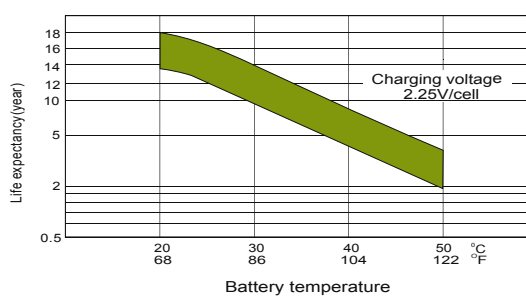
Float Charging Characteristics



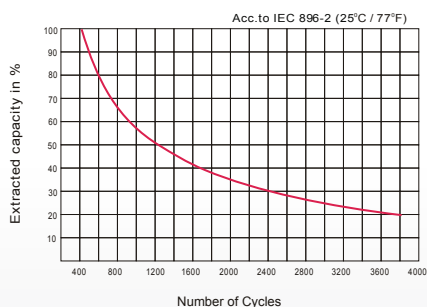
Temperature Effects in Relation to Battery Capacity



Effect of Temperature on Long Term Float Life



Cycle Life in Relation to Depth of Discharge



Self Discharge Characteristics

