



SD-PH Protective Housing Installation Sheet

Description

The SD-PH Protective Housing is a protective housing for SuperDuct duct smoke detectors installed in environments with high dew points. The protective housing insulates the detectors and provides circulated air from the monitored HVAC duct to prevent condensation on the device.

Table 1: SD-PH hardware kit

Description	Qty.
SuperDuct sampling/exhaust tube	2
Conduit fitting 3/4-inch trade size, thin-walled	2
Protective cover gasket	1
Self-tapping screw, #10-STx1.25", HX, SS	6
Screw, #10-32x0.50", PN, RH, STL, ZN, ROHS	3
RJ-45 harness (PN 714126-34) for use with four-wire detector	1

Installation

WARNING: To reduce the risk of shock, disconnect all power and allow 10 minutes for stored energy to dissipate before handling. Wear approved glasses and safety gear while drilling holes.

Caution: Maintain a 1/4-inch (6 mm) spacing between power-limited and nonpower-limited wiring.

Notes

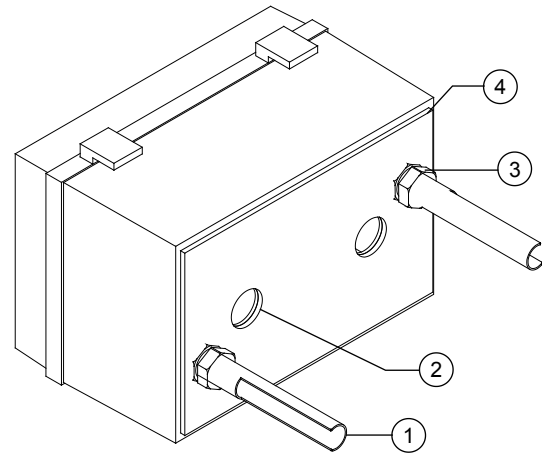
- Not intended for outdoor installation.
- For ease of assembly, mount the SD-PH with the hinges down. See Figure 2.

To install the protective housing:

1. Locate a flat surface on the duct large enough to accommodate the SD-PH.
2. Install the air tubes using conduit fittings as shown in Figure 1. Make sure that the open slots on the air tubes face away from each other.
3. Install the EPDM rubber gasket on the back surface aligning all large opening holes. See Figure 1.
4. Determine the conduit entry location on the housing. Using a hole bit, drill the hole. Make sure that the conduit hole is at least one inch away from the edges.

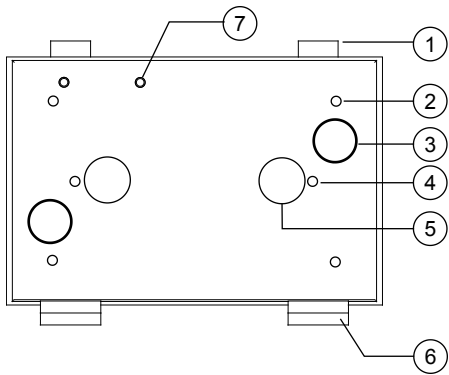
5. Use a weather-proof conduit fitting to bring the field wires into the housing.
6. Use the template on page 3 to mark and drill the duct wall.
7. Install the SD-PH on the duct using the four self-tapping screws provided in the hardware kit. See Figure 2.
8. Install the SuperDuct detector per its installation sheet. For mounting location diagrams, see Figure 2 and Figure 3.
9. If applicable, install the SuperDuct controller on the mounting standoffs and per its installation instructions. See Figure 3 for placement details.
10. After mounting the SuperDuct device in the SD-PH, test per the device's installation instructions.
11. To minimize condensation inside the SD-PH at or below 32°F (0°C), wrap the housing with insulation similar to that used on the HVAC duct.

Figure 1: Rear view of SD-PH



1. SD-PH Air tubes (2)
2. SuperDuct sampling/exhaust tube holes
3. Conduit fitting
4. PDM rubber gasket

Figure 2: Front view of SD-PH



1. Spring latch
2. SD-PH mounting hole (4)
3. SD-PH air tube (2)
4. SuperDuct detector mounting hole (2)
5. SuperDuct sampling/exhaust tube hole (2)
6. Hinge
7. Mounting standoff (3) for optional SuperDuct controller

Maintenance

Use only mild soap and tap water to clean the enclosure.

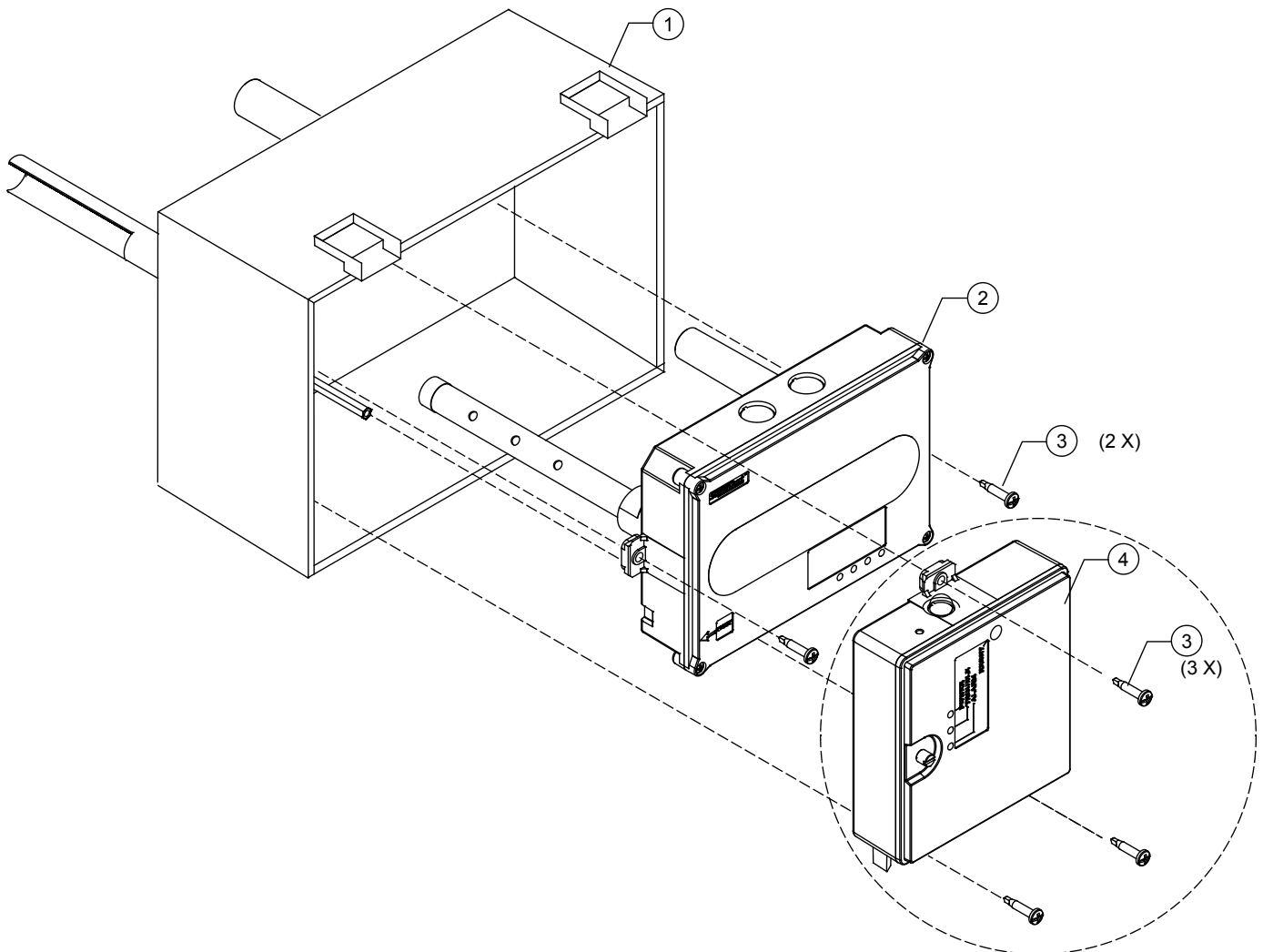
Specifications

Enclosure material	Polycarbonate			
Dimensions	L	W	H	
	Inch	11.8	7.9	7.1
	Millimeter	300	201	180
Operating environment				
Temperature	-4 to 158°F (-20 to 70°C)			
Relative humidity	0 to 98% noncondensing			

Contact information

For contact information, see www.edwardsutdfs.com.

Figure 3: Mounting diagram



1. SD-PH (Shown with access door removed)
2. Detector
3. #10 screw
4. SuperDuct Four-Wire Controller, if required

HOLE TEMPLATE
FOR PROTECTIVE COVER, SUPERDUCT
(ALL DIMENSIONS IN INCHES)

THIS SIDE UP

